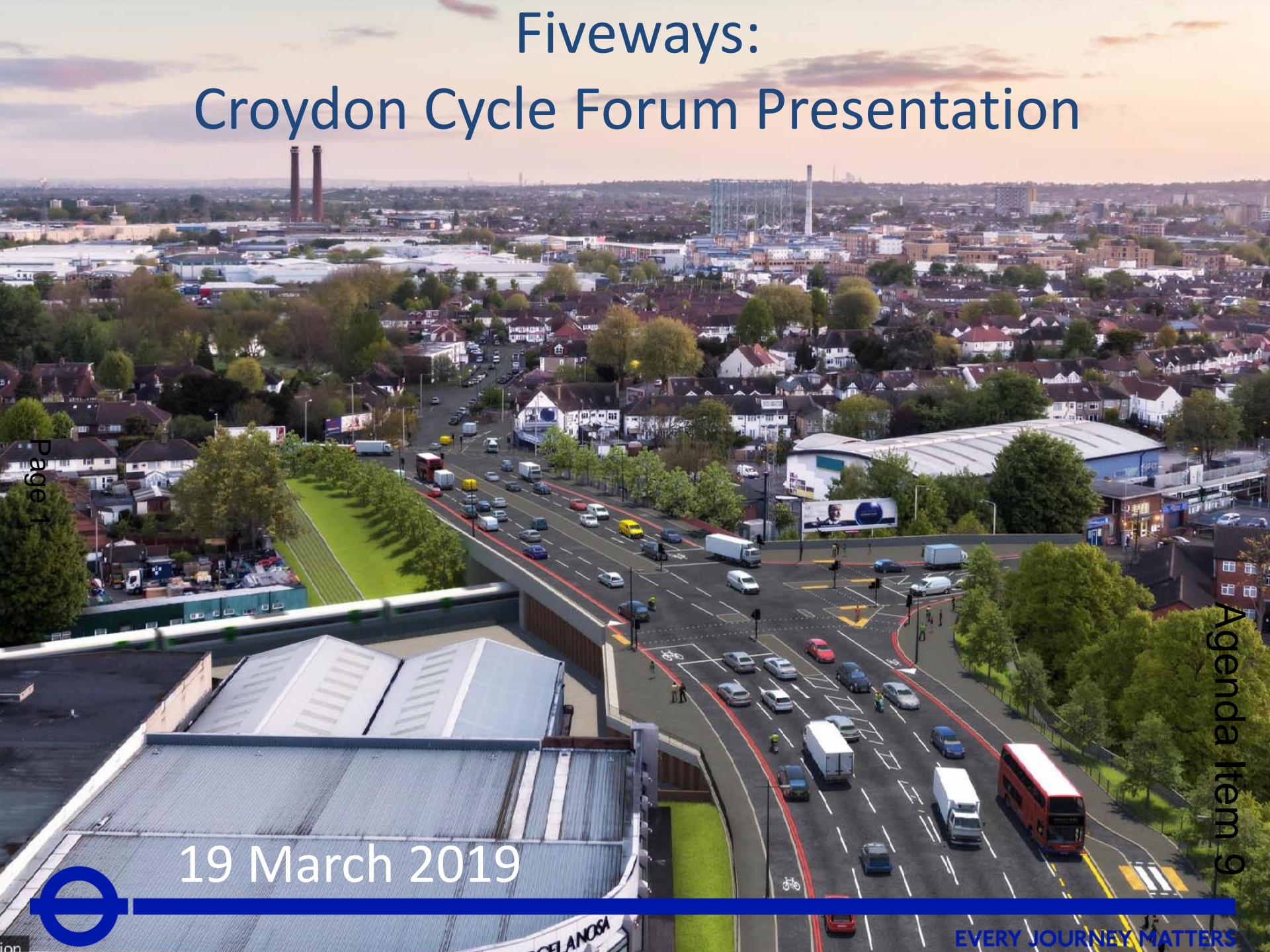


# Fiveways: Croydon Cycle Forum Presentation



19 March 2019



# Background

## Existing Situation

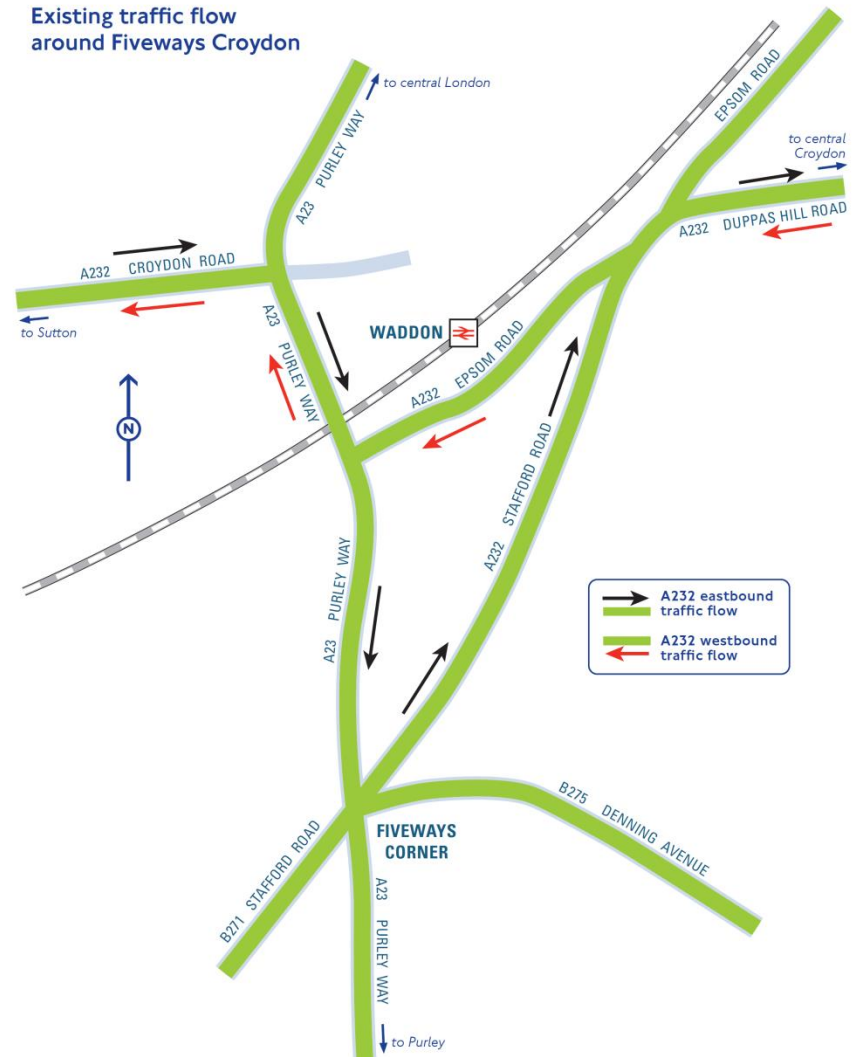


# Background

- Fiveways in Waddon experiences significant levels of congestion during peak periods & weekends
- Croydon's emerging Local Plan has specific policies that are intended to help guide coordinated development in Waddon, to enable its development as a Local Centre.

Page 3  
Significant investment in new transport infrastructure is required to accommodate the anticipated growth and future demand for road space

- TfL and Croydon Council are working in partnership and joint-funding the Fiveways Croydon project to deliver this change



# Project Objectives

- To increase traffic capacity along the A23 and A232 corridors to improve journey time reliability and network resilience, and provide provision for future traffic growth
- To upgrade the pedestrian environment and public realm throughout the Fiveways area
- To enhance the 'place' function of the area and support LBC's aspiration to develop Waddon as a Local Centre
- To provide new or enhanced cycling facilities on the network to link with existing and proposed cycle routes



# Response to Consultation

TfL and Croydon Council consulted on proposed major changes to the A23 and A232 at Croydon Fiveways for ten weeks; between July and September 2017

Received 431 direct responses - 63 per cent fully supported or supported most elements of our proposals.

Following careful consideration of consultation responses, some areas of the proposals have been amended to improve project affordability, further improve the pedestrian environment and strengthen the cycling provision in support of the Mayor's Transport Strategy.

The key changes are:

- Revised alignment to A23 Waddon Station Bridge
- Addition of Left Turn on Stafford Road
- Additional Cycle Facilities on A23
- Amendments to Cycle Facilities on Epsom Road



# Response to Consultation

## Impacts on cycling

Improvements needed to be as good as possible within the resources available

Cycle Forum members are keen to see more safe, segregated cycle lanes in the area

Concern that the proposals prioritise private vehicles over other modes

Request for better provision for cyclists at junctions throughout the scheme

'Left-Hook' risks in proposals

Extension of provision for north-south cycling on the A23 Purley way



# Response to Consultation

Amendments to the design:

- **Revised alignment to A23 Waddon Station Bridge**
- **Addition of Left Turn on Stafford Road**

Page 7

## **Additional Cycle Facilities on A23**

*Segregated cycling facilities through the Fiveways junction on the A23. These facilities will improve north-south cycling on Purley Way. We will also provide advance stop lines and early release for cyclists at junctions throughout the scheme. In total, 700m of additional cycle track has been added to the design since consultation.*

- **Amendments to Cycle Facilities on Epsom Road**
- *Added a right turn only phase to safely move from Epsom Road eastern approach across the junction with Duppas Hill Road and onwards westbound to Epsom Road, or southbound along Stafford Road.*



# Healthy Streets

Supports Healthy Streets approach by improving alternatives to car use and creating more accessible and people-friendly streets

Proposals include:

- Improvements to the street environment, particularly at Fiveways Corner, through the creation of new public space
- New widened footways on Waddon Station Bridge and Fiveways Corner
- Upgraded and simplified pedestrian crossings
- **Creation of new east-west cycle route from Croydon Road to Duppas Hill and north-south cycling route from Croydon Road to the Harris Primary Academy**
- Delivery of a new bus lane northbound on Stafford Road, improving journey times
- Removing A232 east-west traffic from Fiveways Corner by opening up Epsom Road to two-way traffic
- Converting the Fiveways junction to a simplified crossroads





# In Detail: Croydon Road/Purley Way

Existing



Page 9



# In Detail: Croydon Road/Purley Way

Proposed



Page 10



# In Detail: A23 Purley Way

Existing



Page 11



# In Detail: A23 Purley Way

Proposed

Page 12



Artistic impression

TILES BATHROOMS KITCHENS HARDWOOD

PORCELANOSA



# In Detail: Epsom Road

Existing



# In Detail: Epsom Road

Proposed



Page 14



# In Detail: Stafford Road

Existing



Page 15



# In Detail: Stafford Road

Proposed



Page 16





# In Detail: Fiveways Corner

Existing



# In Detail: Fiveways Corner

Proposed

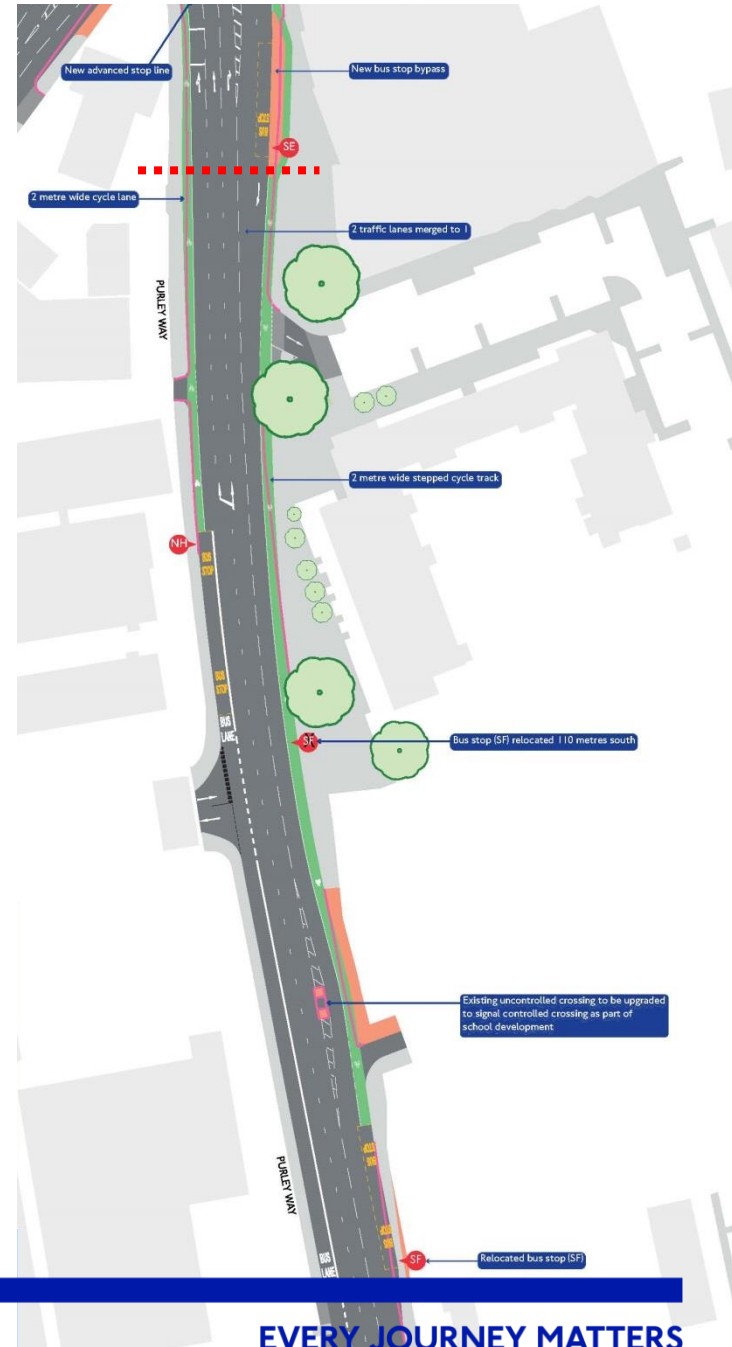
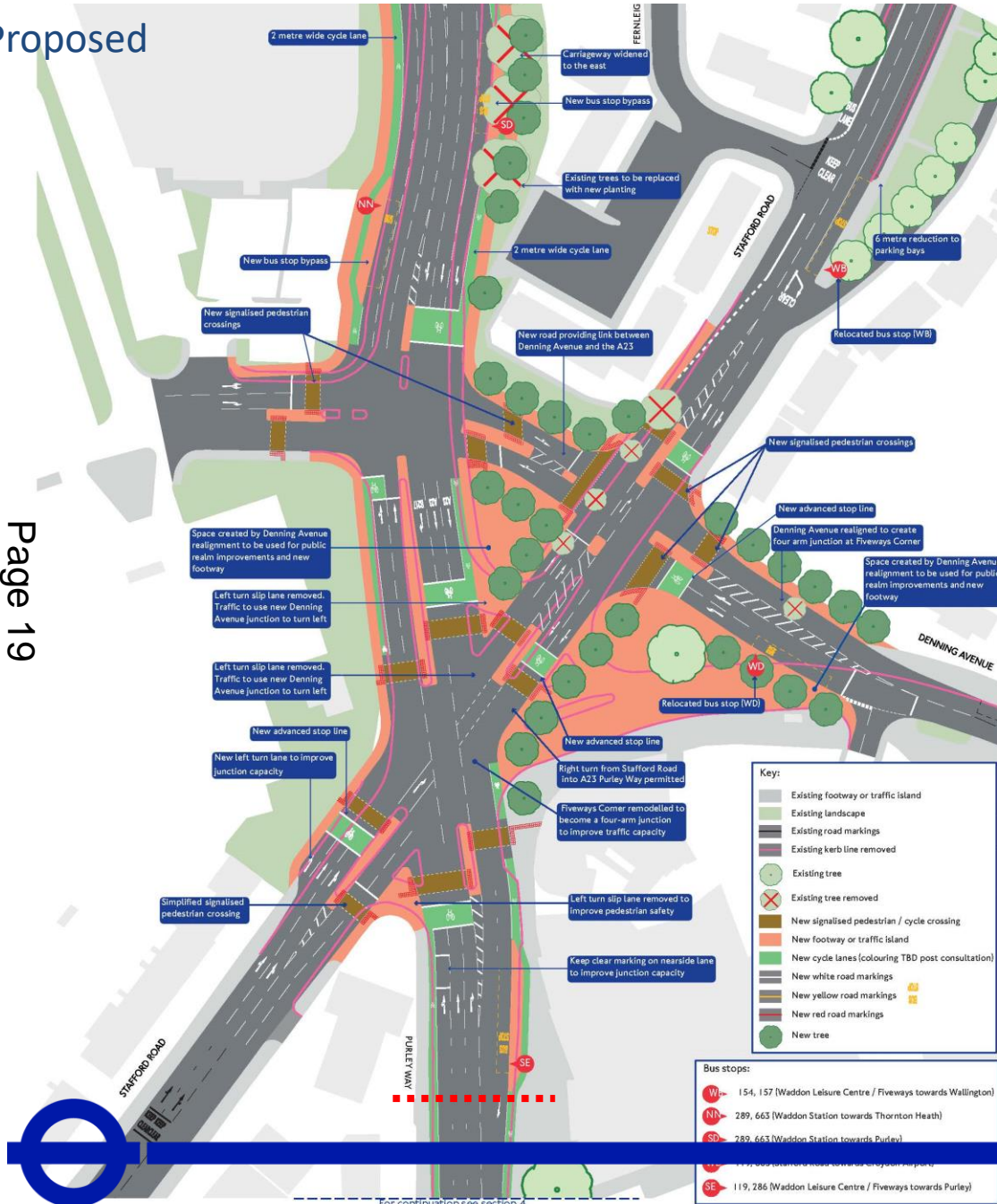
Page 18



# In Detail: Fiveways Corner

Proposed

Page 19



For continuation see section 4

# Cycling Benefits

New and enhanced cycle facilities which link in with the existing local cycle network as well as creating new cycling routes through the scheme area.

- Segregated cycle lanes in both directions on the A23 Purley Way from Croydon Road to Harris Primary Academy
- 1.5 metre wide 'stepped' cycle tracks in both directions and parking bays removed on Epsom Road, to provide a new east-west cycle link from Croydon Road to Duppas Hill Road
- Advanced stop line and segregated cycle feeder lane northbound at Stafford Road junction with Duppas Hill/Epsom road.
- New eastbound cycle lane on Croydon Road on the approach to the A23
- Separate phases for northbound cyclists and left-turning traffic at the junction of A23 Purley Way with Croydon Road, including early release signal arrangements
- New Advanced Stop Lines
- A new northbound bus lane and partially inset parking bays on both sides of Stafford Road, to allow cycles to pass parked cars whilst staying within the bus lanes.
- New cycle parking facilities at Fiveways Corner
- New bus stop bypasses on the A23



# Existing Situation



# Next Steps

## Autumn 2019

Planning application submitted to Croydon Council

## 2020-2021

Detailed design

## 2021-24

Construction



# Any Questions?



Transport for London

Surface Strategy & Network Development Principal Sponsor - Susanna Davies Highways & Traffic Senior Engineer - Chris Tonks



This page is intentionally left blank